

State of Wyoming Corner Record

(in compliance with the CORNER PERPETUATION AND FILING ACT, Wyoming Statutes, 1997, Section 33-29-140, et. seq. and the Rules and Regulations of the Board of Registration for Professional Engineers and Professional Land Surveyors)

Reverse side of this form may be used if more space is needed.

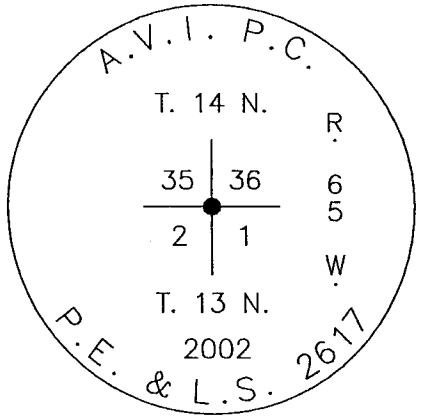
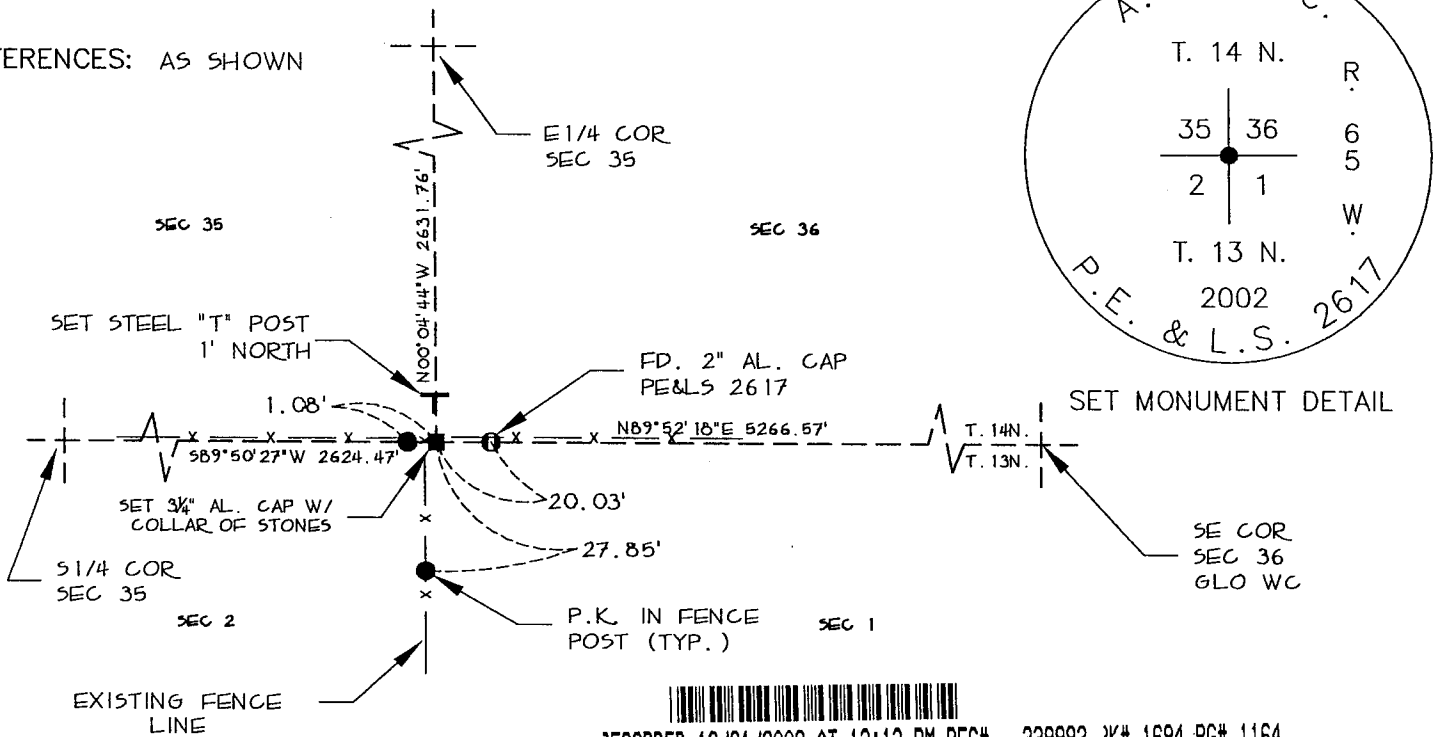
Record of original survey and citation of source of historical information (if corner is lost or obliterated). Description of corner monumentation evidence found and/or monument and accessories established to perpetuate the location of this corner. Sketch of relative location of monument, accessories, and reference points with course and distance to adjacent corner(s) (if determined in this survey). Method and rationale for reestablishment of lost or obliterated corner.

FOUND: FOUND 1" PLASTIC CAP STAMPED "WYO LS 355" ON A #5 x 18" REBAR SETTING 1.0' BELOW THE GROUND SURFACE EAST OF A FENCE CORNER 0.5'. NO EVIDENCE OF ORIGINAL CORNER FOUND.

G.L.O. RECORD: LIMESTONE 24"x10"x 3". SURVEY COMPLETED AUGUST 6, 1870 BY EDWIN JAMES, DEPUTY SURVEYOR

SET: RESET A 3 1/4" ALUMINUM CAP ON #5 x 24" REBAR PROJECTING 6" ABOVE GROUND IN A MOUND OF STONES. STAMPED AND REFERENCED AS SHOWN. RESET TO MEET CURRENT STATE STANDARDS.

REFERENCES: AS SHOWN



RECORDED 12/31/2002 AT 12:13 PM REC# 339992 K# 1694 PG# 1164
 EBRA K. LATHROP, CLERK OF LARAMIE COUNTY, WY PAGE 1 OF 1

Date of Field Work: 9/02 Office Reference: 2-2253.00

CROSS INDEX DIAGRAM

A	1	2	3	4	5	6	7	8	9	10	11	12	13	14	15	16	17	18	19	20	21	22	23	24	25
B																									
C	6																								
D		5																							
E			4																						
F				3																					
G					2																				
H																									
J																									
K																									
L	18																								
M		17																							
N			16																						
O				15																					
P					14																				
Q						13																			
R							12																		
S								11																	
T									10																
U										9															
V											8														
W												7													
X													6												
Y														5											
Z															4										
	1	2	3	4	5	6	7	8	9	10	11	12	13	14	15	16	17	18	19	20	21	22	23	24	25

Firm/Agency, Address,
James D. Voeller, P.E & P.L.S.
A.V.I., p.c.
2035 Westland Road
Cheyenne, WY 82001
 Telephone Number: (307) 637-3400

This corner record was prepared by me or under my direction and supervision.
 SEAL & SIGNATURE

